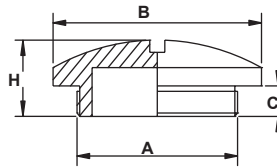
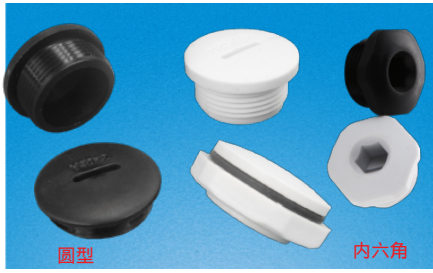


### RCCN 日成SP型尼龙旋转塞头 Nylon Screw Plug



螺牙规格:公制螺牙(Metric)、德制螺牙PG  
 产品材质:采用UL认证尼龙66,防火等级94V-2.  
 防护等级:在规定的卡口范围内,并使用O形密封圈旋紧,达到IP68.  
 颜色种类:黑色、白色  
 工作温度:-40°C至100°C,瞬间可耐热达120°C.  
 产品特性:为预备的孔或多余的孔塞平,使产品美观.  
 可防水、防尘、抗盐、耐酸碱、酒精、油、脂及一般溶剂.  
**备注:产品配螺母,垫片整套.**



Material:UL approved nylon 66,fireproof class 94V-2.  
 Protect grade:up to IP68, using washer and in the cable range  
 Color:black、white -40°C to 100°C  
 单位/Unit:mm

型号 Item No		螺牙规格 Thread	螺纹外径 Thread O.D. A	机板开孔 Panel Mounting Hole	螺纹长度 Thread Length C	接合长度 Thread Length H	外圆尺寸 size B	包装 Std.Pkg. pcs	
灰白色 White	黑色 Black								
<b>公制圆型标准 SP-M</b>									
SP-M12W	SP-M12B	M12*1.5	12	12-12.3	8	12.5	15	100PCS	
SP-M16W	SP-M16B	M16*1.5	16	16-16.3	8	13	19		
SP-M18W	SP-M18B	M18*1.5	18	18-18.3	9	13	22		
SP-M20W	SP-M20B	M20*1.5	20	20-20.3	9	13	25		
SP-M22W	SP-M22B	M22*1.5	22	22-22.3	10	15	27		
SP-M25W	SP-M25B	M25*1.5	25	25-25.3	10	15.5	30		
SP-M27W	SP-M27B	M27*1.5	27	27-27.3	10	15.5	33		
SP-M30W	SP-M30B	M30*1.5	30	30-30.3	8	12.5	35	50PCS	
SP-M32W	SP-M32B	M32*1.5	32	32-32.3	10	16	38		
SP-M40W	SP-M40B	M40*1.5	40	40-40.3	11	16	46	20PCS	
SP-M50W	SP-M50B	M50*1.5	50	50-50.3	13	18	56		
SP-M63W	SP-M63B	M63*1.5	63	63-63.3	14	19	68		
<b>德制圆型标准 SP-PG</b>									
SP-PG7W	SP-PG7B	PG 7	12.5	12.5-12.8	8	12.2	15	100PCS	
SP-PG9W	SP-PG9B	PG 9	15.2	15.2-15.8	8	13	19		
SP-PG11W	SP-PG11B	PG 11	18.6	18.6-18.9	9	13	22		
SP-PG13.5W	SP-PG13.5B	PG 13.5	20.4	20.4-20.7	9	13	25		
SP-PG16W	SP-PG16B	PG 16	22.5	22.5-22.8	10	15	27		
SP-PG21W	SP-PG21B	PG 21	28.3	28.3-28.7	10	15.5	33		
SP-PG29W	SP-PG29B	PG 29	37.0	37.0-37.4	11	16	44		
SP-PG36W	SP-PG36B	PG 36	47.0	47.0-47.4	13	18	55	50PCS	
SP-PG42W	SP-PG42B	PG 42	54.0	54.0-54.4	13	18.5	62		
SP-PG48W	SP-PG48B	PG 48	59.3	59.3-59.7	14	19.5	68	20PCS	
灰白色	黑色	内六角扳手	螺牙规格	螺纹外径	机板开孔	螺纹长度	高度	扳手	包装
<b>公制内六角 SP6-M</b>									
SP6-M12W	SP6-M12B	6	M12*1.5	12	12-12.3	8.5	13	15	100PCS
SP6-M16W	SP6-M16B	8	M16*1.5	16	16-16.3	8.5	13	19	
SP6-M18W	SP6-M18B	8	M18*1.5	18	18-18.3	9	14.5	24	
SP6-M20W	SP6-M20B	8	M20*1.5	20	20-20.3	9	14.5	24	
SP6-M22W	SP6-M22B	8	M22*1.5	22	22-22.3	11	16	28	
SP6-M25W	SP6-M25B	8	M25*1.5	25	25-25.3	12	17	28	
SP6-M32W	SP6-M32B	8	M32*1.5	32	32-32.3	12	18	36	
SP6-M40W	SP6-M40B	8	M40*1.5	40	40-40.3	14	18	46	50PCS
SP6-M50W	SP6-M50B	8	M50*1.5	50	50-50.3	14	20	55	
SP6-M63W	SP6-M63B	8	M63*1.5	63	63-63.3	14	21	70	20PCS
<b>德制内六角 SP6-PG</b>									
SP6-PG7W	SP6-PG7B	6	PG 7	12.5	12.5-12.8	8.5	13	15	100PCS
SP6-PG9W	SP6-PG9B	8	PG 9	15.2	15.2-15.8	8.5	13	19	
SP6-PG11W	SP6-PG11B	8	PG 11	18.6	18.6-18.9	9	14.5	24	
SP6-PG13.5W	SP6-PG13.5B	8	PG 13.5	20.4	20.4-20.7	9	14.5	24	
SP6-PG16W	SP6-PG16B	8	PG 16	22.5	22.5-22.8	12	16	28	
SP6-PG21W	SP6-PG21B	8	PG 21	28.3	28.3-28.7	12	18	36	
SP6-PG29W	SP6-PG29B	8	PG 29	37.0	37.0-37.4	14	18	46	
SP6-PG36W	SP6-PG36B	8	PG 36	47.0	47.0-47.4	14	20	55	50PCS
SP6-PG42W	SP6-PG42B	8	PG 42	54.0	54.0-54.4	14	20	60	
SP6-PG48W	SP6-PG48B	8	PG 48	59.3	59.3-59.7	14	21	70	20PCS
<b>美制内六角 SP6-NPT</b>									
SP6-NPT3/8W	SP6-NPT3/8B	8	NPT3/8	17	17-17.3	13	17	24	100PCS
SP6-NPT1/2W	SP6-NPT1/2B	8	NPT1/2	21.2	21.2-21.5	13	17	24	
SP6-NPT3/4W	SP6-NPT3/4B	8	NPT3/4	26.2	26.2-26.5	15	20	28	
SP6-NPT1W	SP6-NPT1B	8	NPT1	33.3	33.3-33.6	15	21	36	50PCS
SP6-NPT1-1/4W	SP6-NPT1-1/4B	8	NPT1-1/4	42	42-42.3	15	19	46	
SP6-NPT1-1/2W	SP6-NPT1-1/2B	8	NPT1-1/2	48	48-48.3	15	21	55	20PCS